



WHEEL 200R4F1R0N

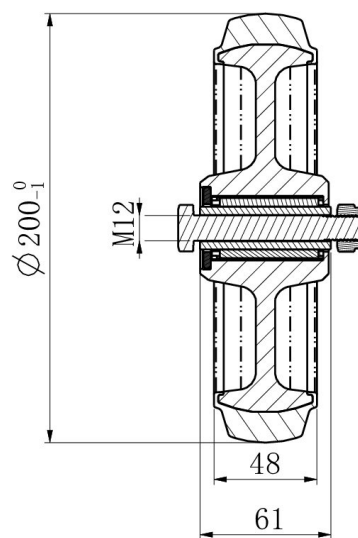
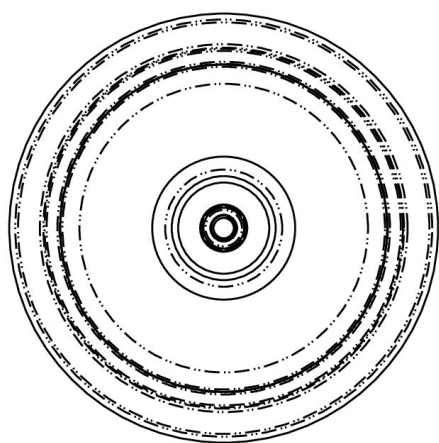


Product SKU	200R4F1R0N
Standard Compliance	DIN EN 12532
Series	R4F1
Material of the Wheel	polyamide (PA) wheel center
Tread	elastic tread
Temperature range	-20°C to +80°C
Wheel Diameter	200mm
Load Capacity	350kg
Width of Tread	46mm
wheel hub Width	59mm
Wheel Bolt Size	M12
Bushing Diameter	20mm
Weight	1.21kg
Wheel Bearing	roller bearing
Rubber Shore	75° Shore A





WHEEL 200R4F1R0N



TD_200R4F1R0N

load
capacity

350KG

