



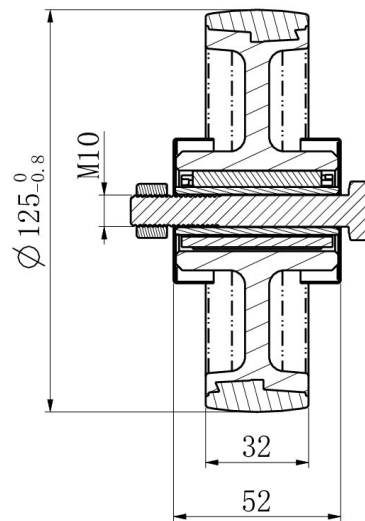
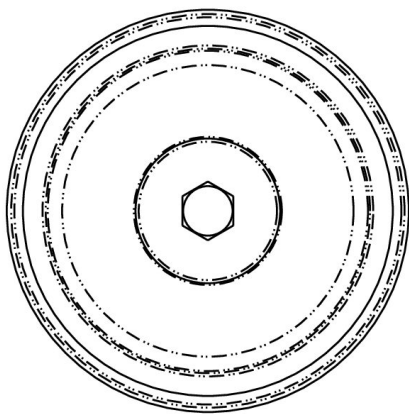
WHEEL 125N2U6R1W



Product SKU	125N2U6R1W
Standard Compliance	DIN EN 12532
Series	N2U6
Material of the Wheel	polyamide (PA) wheel center
Tread	polyurethane (PU) tread
Temperature range	-40°C to +80°C
Wheel Diameter	125mm
Load Capacity	200kg
Width of Tread	32mm
wheel hub Width	50mm
Wheel Bolt Size	M10
Bushing Diameter	15mm
Weight	0.41kg
Wheel Bearing	roller bearing
Rubber Shore	95° Shore A



WHEEL 125N2U6R1W



TD_125N2U6R1W		
load capacity	200KG	