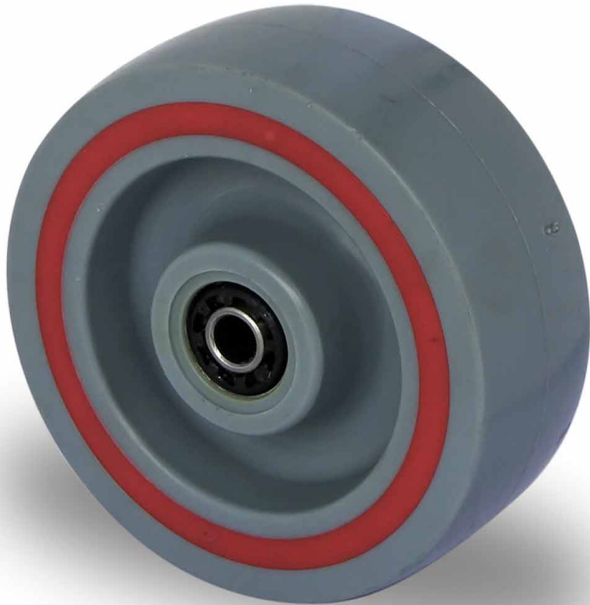




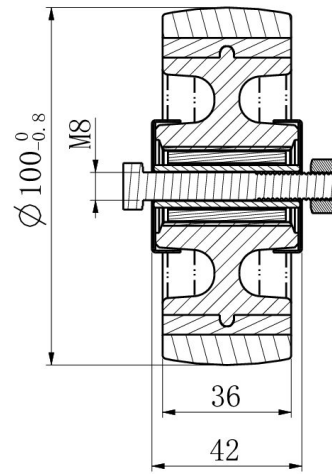
WHEEL 100T6P2R1W



Product SKU	100T6P2R1W
Standard Compliance	DIN EN 12532
Series	T6P2
Material of the Wheel	polypropylene (PP) wheel center
Tread	polypropylene (PP) tread
Temperature range	-20°C to +60°C
Wheel Diameter	100mm
Load Capacity	160kg
Width of Tread	36mm
wheel hub Width	40mm
Wheel Bolt Size	M8
Bushing Diameter	12mm
Weight	0.29kg
Wheel Bearing	roller bearing



WHEEL 100T6P2R1W



TD_100T6P2R1W		
load capacity	160KG	