



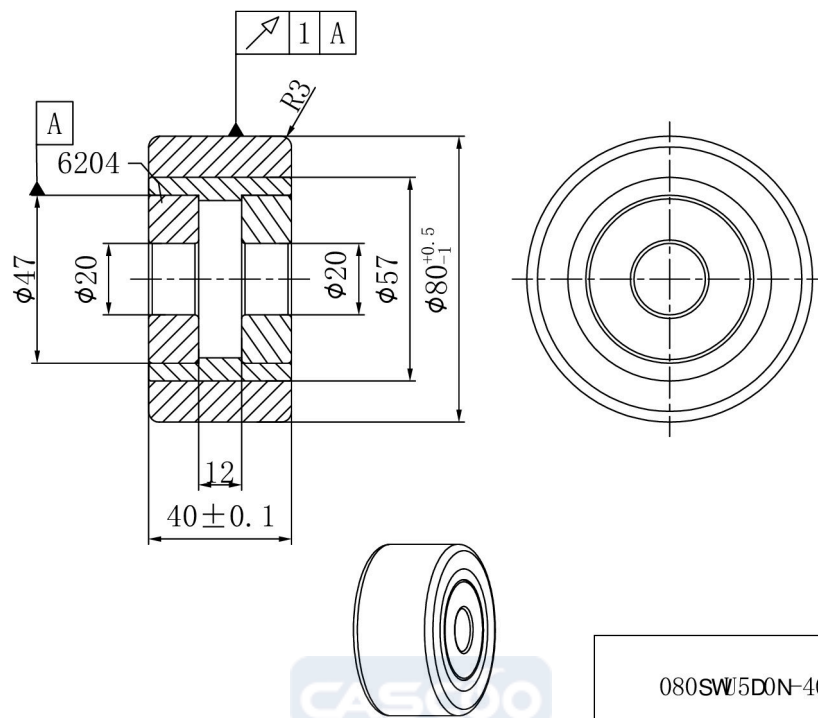
WHEEL 080SWU5D0N-40

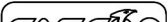


Product SKU	080SWU5D0N-40
Material of the Wheel	steel wheel center
Tread	cast polyurethane (CPU) tread
Temperature range	-20°C to +60°C
Wheel Diameter	80mm
Load Capacity	280kg
Wheel Bearing	double ball bearing
Rubber Shore	95° Shore A



WHEEL 080SWU5D0N-40



080SW15D0N-40		
load capacity	280KG	