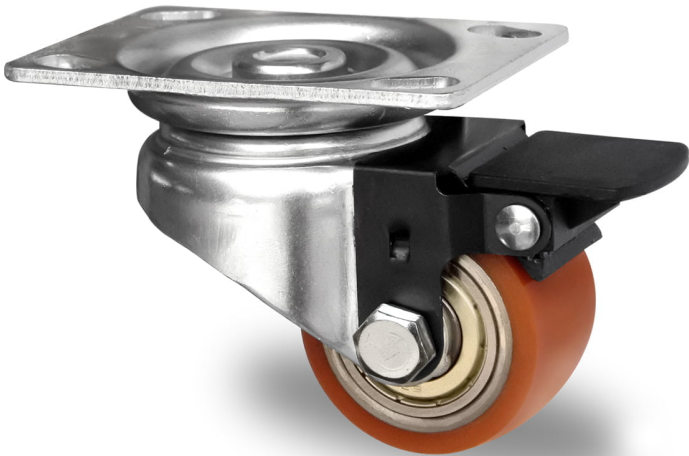
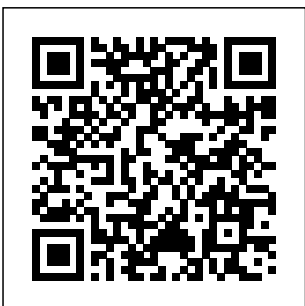


## CASTOR TZPS1WC050SWU5D0N



|                                  |                         |
|----------------------------------|-------------------------|
| <b>Product SKU</b>               | TZPS1WC050SWU5D0N       |
| <b>Standard Compliance</b>       | DIN EN 12530            |
| <b>Series</b>                    | SWU5                    |
| <b>Fastening</b>                 | Plate fastening         |
| <b>Brake and Direction</b>       | back brake              |
| <b>Material of the Wheel</b>     | steel wheel center      |
| <b>Tread</b>                     | polyurethane (PU) tread |
| <b>Temperature range</b>         | -20°C to +60°C          |
| <b>Wheel Diameter</b>            | 50mm                    |
| <b>Load Capacity</b>             | 150kg                   |
| <b>Total Height</b>              | 72mm                    |
| <b>Width of Tread</b>            | 33mm                    |
| <b>wheel hub Width</b>           | 36mm                    |
| <b>Offset</b>                    | 30mm                    |
| <b>Dimension of Plate</b>        | 90x66mm                 |
| <b>Hole Spacing of the Plate</b> | 75/61x51/45mm           |
| <b>Swivel Radius</b>             | 75mm                    |
| <b>Wheel Bolt Size</b>           | M8                      |
| <b>Bushing Diameter</b>          | 8mm                     |
| <b>Weight</b>                    | 0.57kg                  |
| <b>Wheel Bearing</b>             | double ball bearing     |
| <b>Rubber Shore</b>              | 94° Shore A             |





# CASTOR TZPS1WC050SWU5D0N

