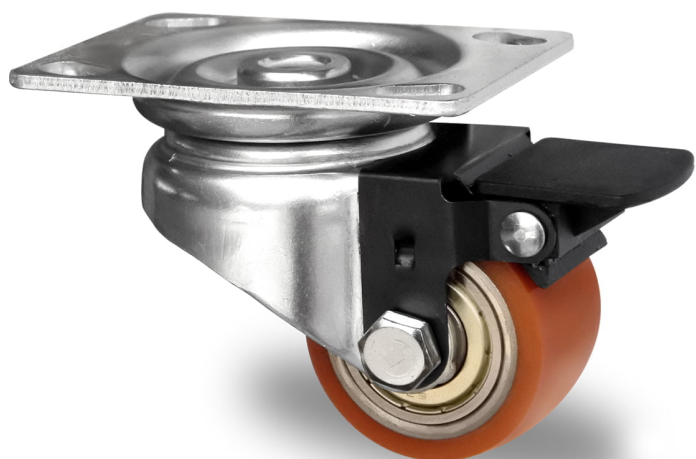


## CASTOR TZPS1WC050SWU5D0N



<b>Product SKU</b>	TZPS1WC050SWU5D0N
<b>Standard Compliance</b>	DIN EN 12530
<b>Series</b>	SWU5
<b>Fastening</b>	Plate fastening
<b>Brake and Direction</b>	back brake
<b>Material of the Wheel</b>	steel wheel center
<b>Tread</b>	polyurethane (PU) tread
<b>Temperature range</b>	-20°C to +60°C
<b>Wheel Diameter</b>	50mm
<b>Load Capacity</b>	150kg
<b>Total Hight</b>	72mm
<b>Width of Tread</b>	33mm
<b>wheel hub Width</b>	36mm
<b>Offset</b>	30mm
<b>Dimension of Plate</b>	90x66mm
<b>Hole Spacing of the Plate</b>	75/61×51/45mm
<b>Swivel Radius</b>	75mm
<b>Wheel Bolt Size</b>	M8
<b>Bushing Diameter</b>	8mm
<b>Weight</b>	0.57kg
<b>Wheel Bearing</b>	double ball bearing
<b>Rubber Shore</b>	94° Shore A





## CASTOR TZPS1WC050SWU5D0N

