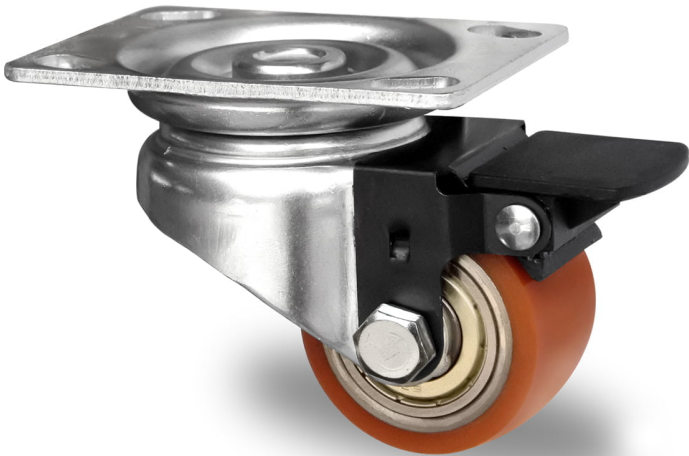
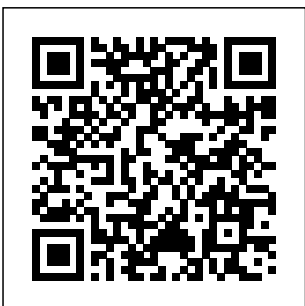


CASTOR TZPS1WC050SWU5D0N



Product SKU	TZPS1WC050SWU5D0N
Standard Compliance	DIN EN 12530
Series	SWU5
Fastening	Plate fastening
Brake and Direction	back brake
Material of the Wheel	steel wheel center
Tread	polyurethane (PU) tread
Temperature range	-20°C to +60°C
Wheel Diameter	50mm
Load Capacity	150kg
Total Height	72mm
Width of Tread	33mm
wheel hub Width	36mm
Offset	30mm
Dimension of Plate	90x66mm
Hole Spacing of the Plate	75/61x51/45mm
Swivel Radius	75mm
Wheel Bolt Size	M8
Bushing Diameter	8mm
Weight	0.57kg
Wheel Bearing	double ball bearing
Rubber Shore	94° Shore A





CASTOR TZPS1WC050SWU5D0N

