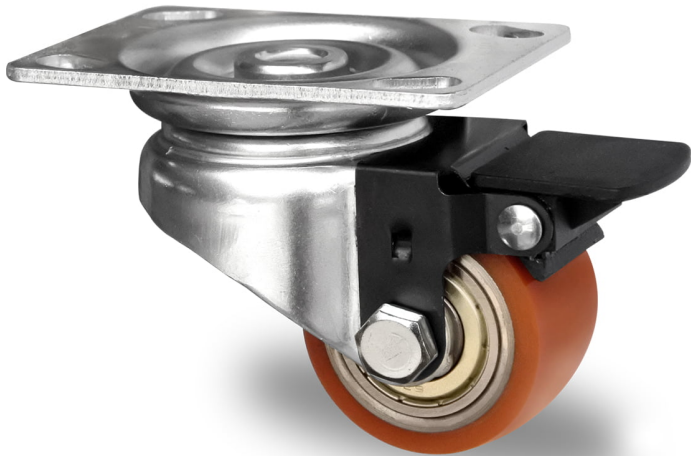


CASTOR TZP21WC060SWU5D0N



Product SKU	TZP21WC060SWU5D0N
Standard Compliance	DIN EN 12530
Series	SWU5
Fastening	Plate fastening
Brake and Direction	back brake
Material of the Wheel	steel wheel center
Tread	polyurethane (PU) tread
Temperature range	-20°C to +60°C
Wheel Diameter	60mm
Load Capacity	150kg
Total Hight	80mm
Width of Tread	35mm
wheel hub Width	42mm
Offset	33mm
Dimension of Plate	105x80mm
Hole Spacing of the Plate	80x60mm
Swivel Radius	83mm
Wheel Bolt Size	M8
Bushing Diameter	8mm
Weight	0.8kg
Wheel Bearing	double ball bearing
Rubber Shore	94° Shore A

