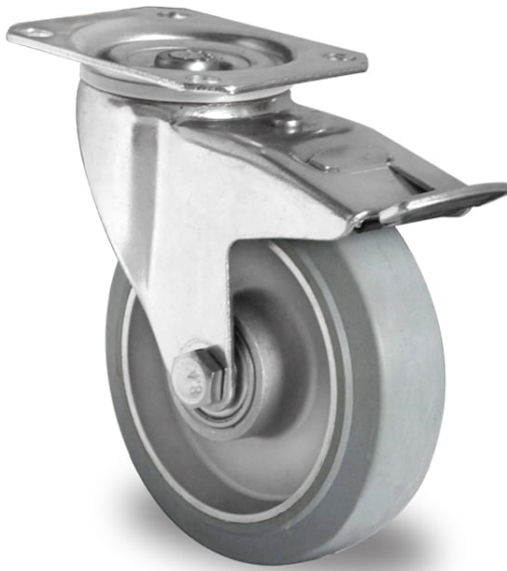
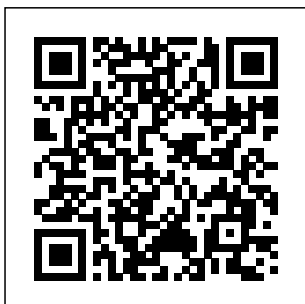


CASTOR TPP37WC100AAE2D0N



Product SKU	TPP37WC100AAE2D0N
Standard Compliance	DIN EN 12532
Series	AAE2
Fastening	Plate fastening
Brake and Direction	back brake
Material of the Wheel	aluminum wheel center
Tread	elastic tread
Temperature range	-20°C to +80°C
Wheel Diameter	100mm
Load Capacity	200kg
Total Height	128mm
Width of Tread	40mm
wheel hub Width	40mm
Offset	40mm
Dimension of Plate	105x80mm
Hole Spacing of the Plate	80/77x60mm
Swivel Radius	127mm
Wheel Bolt Size	M8
Bushing Diameter	12mm
Weight	1.26kg
Wheel Bearing	double ball bearing
Rubber Shore	65° Shore A





CASTOR TPP37WC100AAE2D0N

