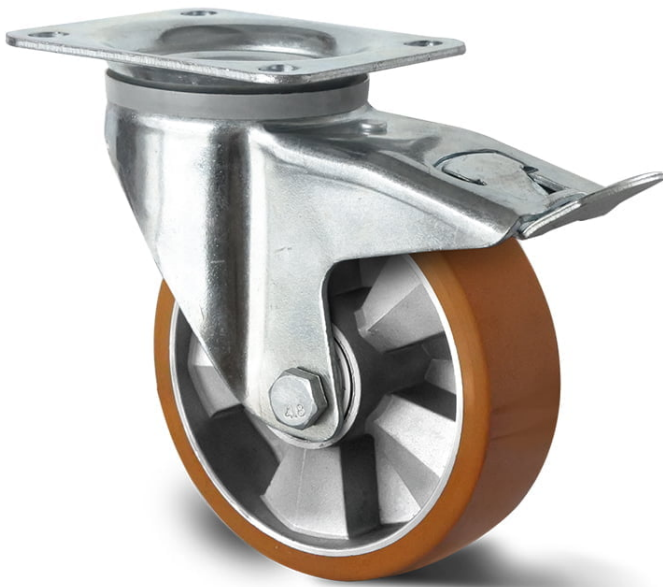
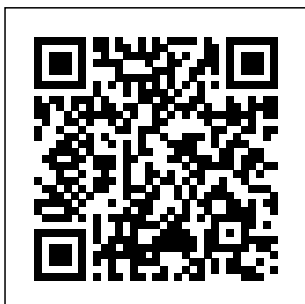


## CASTOR THP5EWC125BAU5D0N



<b>Product SKU</b>	THP5EWC125BAU5D0N
<b>Standard Compliance</b>	DIN EN 12533
<b>Series</b>	BAU5
<b>Fastening</b>	Plate fastening
<b>Brake and Direction</b>	back brake
<b>Material of the Wheel</b>	aluminum wheel center
<b>Tread</b>	polyurethane (PU) tread
<b>Temperature range</b>	-20°C to +60°C
<b>Wheel Diameter</b>	125mm
<b>Load Capacity</b>	400kg
<b>Total Height</b>	164mm
<b>Width of Tread</b>	50mm
<b>wheel hub Width</b>	60mm
<b>Offset</b>	55mm
<b>Dimension of Plate</b>	135x110mm
<b>Hole Spacing of the Plate</b>	105x84/76mm
<b>Swivel Radius</b>	155mm
<b>Wheel Bolt Size</b>	M12
<b>Bushing Diameter</b>	20mm
<b>Weight</b>	2.64kg
<b>Wheel Bearing</b>	double ball bearing
<b>Rubber Shore</b>	94° Shore A





# CASTOR THP5EWC125BAU5D0N

