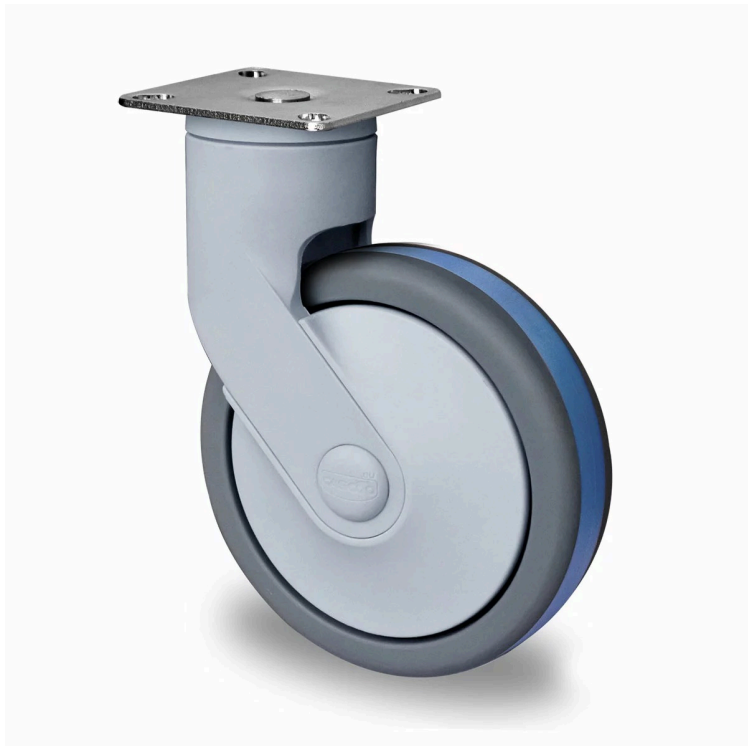
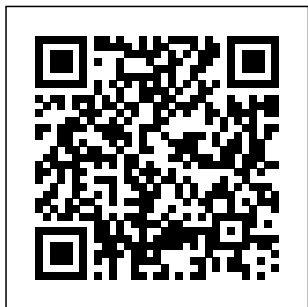


CASTOR SCPJSPC125P2Q2B42



Product SKU	SCPJSPC125P2Q2B42
Standard Compliance	DIN EN 12527
Series	CARA
Fastening	Plate fastening
Brake and Direction	swivel without brake
Material of the Wheel	polypropylene (PP) wheel center
Tread	thermoplastic rubber tread
Temperature range	-20°C to +60°C
Wheel Diameter	125mm
Load Capacity	110kg
Total Height	165mm
Width of Tread	32mm
wheel hub Width	32mm
Offset	40mm
Dimension of Plate	95x70mm
Hole Spacing of the Plate	75x50mm
Wheel Bolt Size	M8
Bushing Diameter	8mm
Wheel Bearing	ball bearing
Rubber Shore	85° Shore A/65° Shore A





CASTOR SCPJSPC125P2Q2B42

