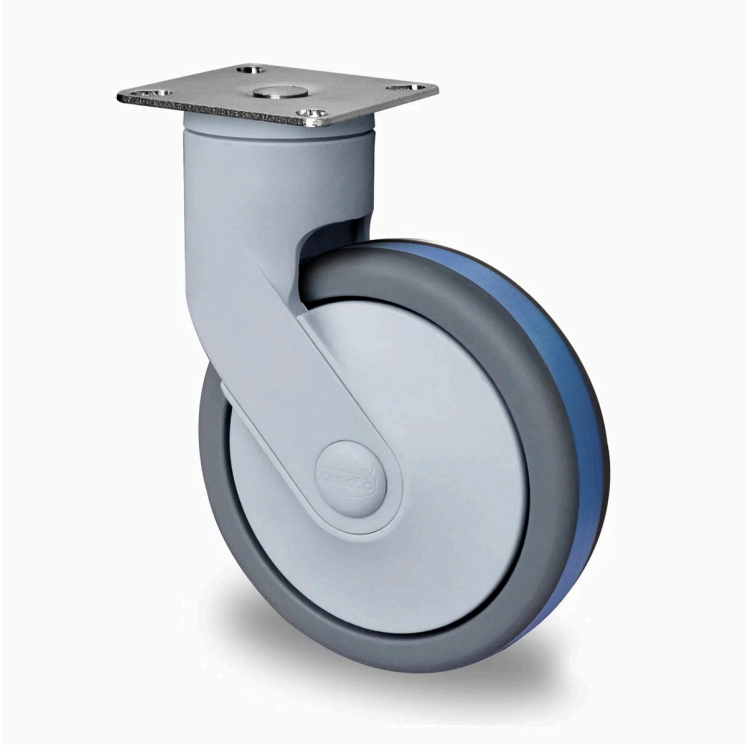


## CASTOR SCPJSPC100P2Q2B42



<b>Product SKU</b>	SCPJSPC100P2Q2B42
<b>Standard Compliance</b>	DIN EN 12527
<b>Series</b>	CARA
<b>Fastening</b>	Plate fastening
<b>Brake and Direction</b>	swivel without brake
<b>Material of the Wheel</b>	polypropylene (PP) wheel center
<b>Tread</b>	thermoplastic rubber tread
<b>Temperature range</b>	-20°C to +60°C
<b>Wheel Diameter</b>	100mm
<b>Load Capacity</b>	100kg
<b>Total Height</b>	140mm
<b>Width of Tread</b>	32mm
<b>wheel hub Width</b>	32mm
<b>Offset</b>	38mm
<b>Dimension of Plate</b>	95x70mm
<b>Hole Spacing of the Plate</b>	75x50mm
<b>Wheel Bolt Size</b>	M8
<b>Bushing Diameter</b>	8mm
<b>Wheel Bearing</b>	ball bearing
<b>Rubber Shore</b>	85° Shore A/65° Shore A






# CASTOR SCPJSPC100P2Q2B42

