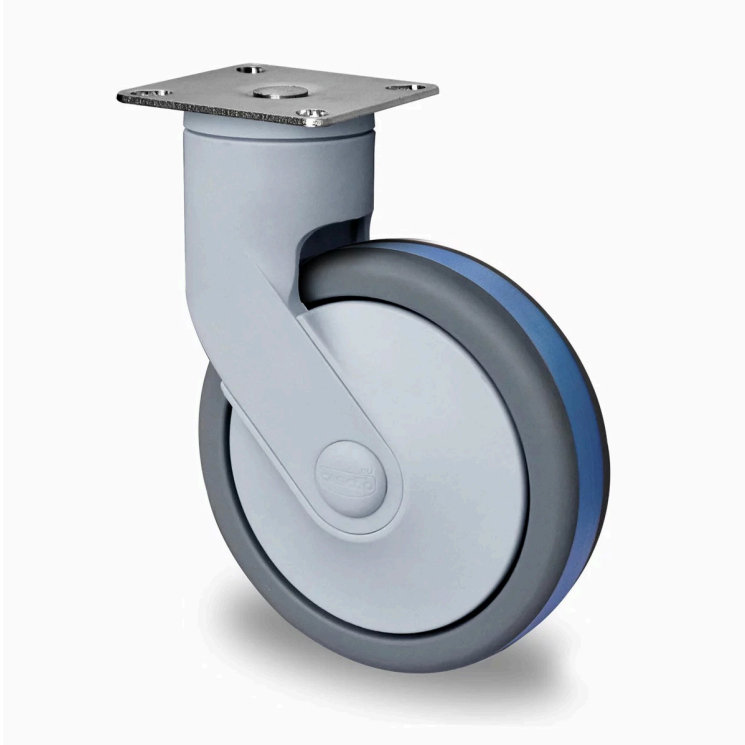


CASTOR SCPESPC100P2Q2B42



| | |
|----------------------------------|---------------------------------|
| Product SKU | SCPESPC100P2Q2B42 |
| Standard Compliance | DIN EN 12527 |
| Series | CARA |
| Fastening | Plate fastening |
| Brake and Direction | swivel without brake |
| Material of the Wheel | polypropylene (PP) wheel center |
| Tread | thermoplastic rubber tread |
| Temperature range | -20°C to +60°C |
| Wheel Diameter | 100mm |
| Load Capacity | 100kg |
| Total Height | 140mm |
| Width of Tread | 32mm |
| wheel hub Width | 32mm |
| Offset | 38mm |
| Dimension of Plate | 77x67mm |
| Hole Spacing of the Plate | 61.5/56x51.5/46.5mm |
| Wheel Bolt Size | M8 |
| Bushing Diameter | 8mm |
| Wheel Bearing | ball bearing |
| Rubber Shore | 85° Shore A/65° Shore A |





CASTOR SCPEPC100P2Q2B42

