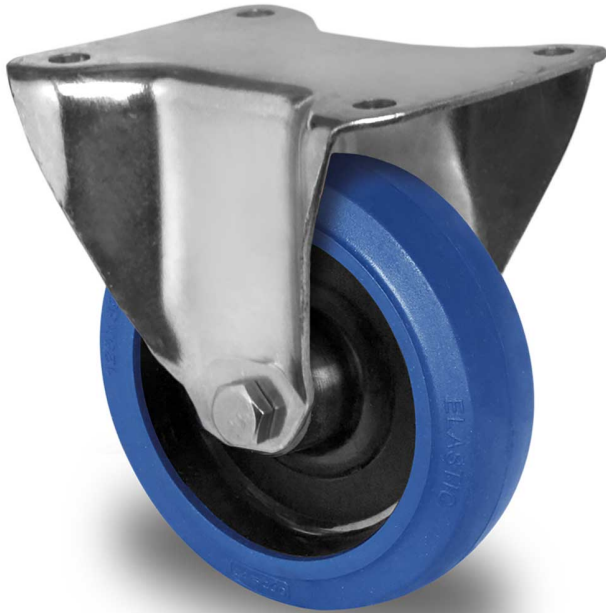


CASTOR FPP43WC125R4F1R0N



Product SKU	FPP43WC125R4F1R0N
Standard Compliance	DIN EN 12532
Series	R4F1
Fastening	Plate fastening
Brake and Direction	fixed direction
Material of the Wheel	polyamide (PA) wheel center
Tread	elastic tread
Temperature range	-20°C to +80°C
Wheel Diameter	125mm
Load Capacity	200kg
Total Hight	155mm
Width of Tread	38mm
wheel hub Width	50mm
Dimension of Plate	135x110mm
Hole Spacing of the Plate	105x84/76mm
Wheel Bolt Size	M10
Bushing Diameter	15mm
Weight	1.03kg
Wheel Bearing	roller bearing
Rubber Shore	75° Shore A

