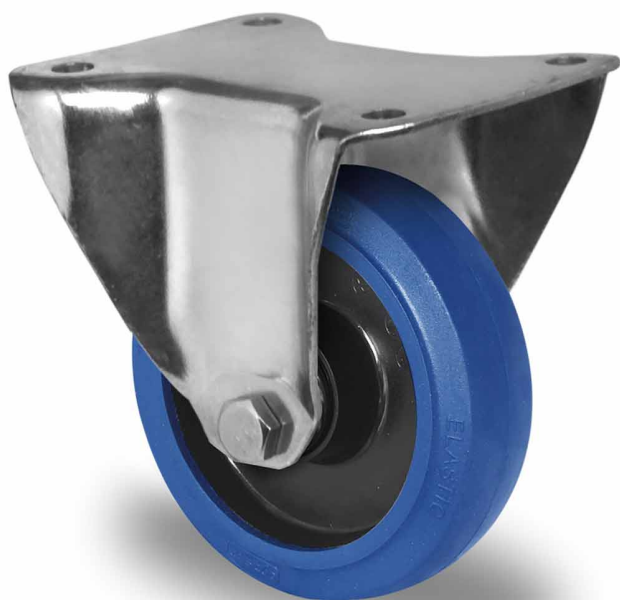


## CASTOR FPP43WC125R4E1B34



<b>Product SKU</b>	FPP43WC125R4E1B34
<b>Standard Compliance</b>	DIN EN 12532
<b>Series</b>	R4E1
<b>Fastening</b>	Plate fastening
<b>Brake and Direction</b>	fixed direction
<b>Material of the Wheel</b>	polyamide (PA) wheel center
<b>Tread</b>	elastic tread
<b>Temperature range</b>	-20°C to +80°C
<b>Wheel Diameter</b>	125mm
<b>Load Capacity</b>	250kg
<b>Total Hight</b>	155mm
<b>Width of Tread</b>	38mm
<b>wheel hub Width</b>	50mm
<b>Dimension of Plate</b>	135x110mm
<b>Hole Spacing of the Plate</b>	105x84/76mm
<b>Wheel Bolt Size</b>	M10
<b>Bushing Diameter</b>	10mm
<b>Weight</b>	0.99kg
<b>Wheel Bearing</b>	ball bearing
<b>Rubber Shore</b>	65° Shore A

