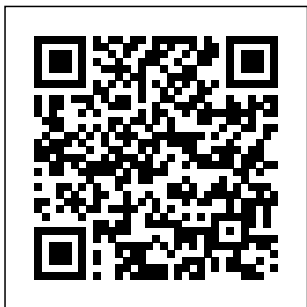


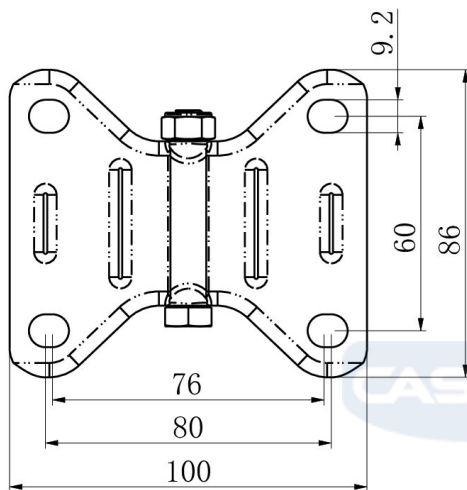
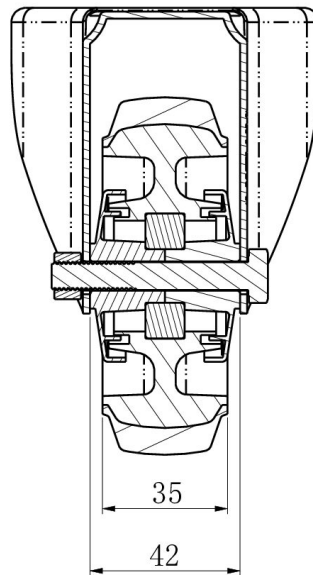
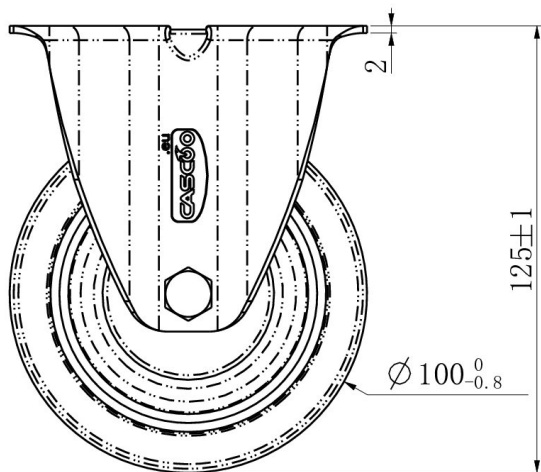
CASTOR FBP22WC100P2D2B32E



Product SKU	FBP22WC100P2D2B32E
Standard Compliance	DIN EN 12532
Series	P2D2 (ESD)
Fastening	Plate fastening
Brake and Direction	fixed direction
Material of the Wheel	polypropylene (PP) wheel center
Tread	thermoplastic rubber tread
Temperature range	-20°C to +60°C
Wheel Diameter	100mm
Load Capacity	90kg
Total Height	125mm
Width of Tread	35mm
wheel hub Width	40mm
Dimension of Plate	105x80mm
Hole Spacing of the Plate	80/77x60mm
Wheel Bolt Size	M8
Bushing Diameter	8mm
Weight	0.47kg
Wheel Bearing	ball bearing
Special Features	electrostatic (ESD)



CASTOR FBP22WC100P2D2B32E



TD_FBP22WC100P2D2B32E		
load capacity	90KG	