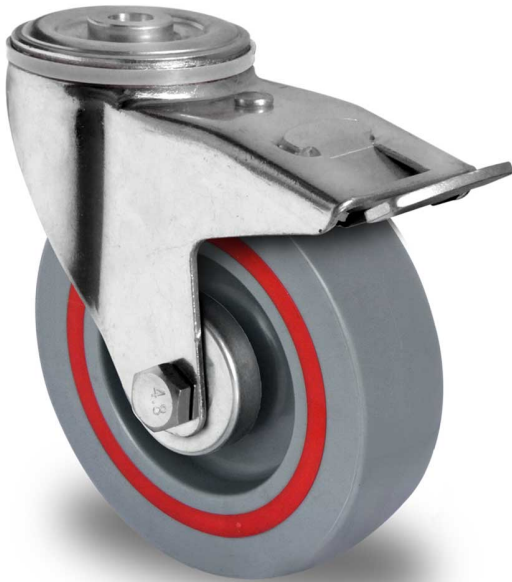


CASTOR BPH35WC100T6P2B36



Product SKU	BPH35WC100T6P2B36
Standard Compliance	DIN EN 12532
Series	T6P2
Fastening	Bolt fastening
Brake and Direction	back brake
Material of the Wheel	polypropylene (PP) wheel center
Tread	polypropylene (PP) tread
Temperature range	-20°C to +60°C
Wheel Diameter	100mm
Load Capacity	160kg
Total Height	127mm
Width of Tread	36mm
wheel hub Width	46mm
Offset	40mm
Fastening Bolt Hole Diameter	13mm
Swivel Radius	127mm
Wheel Bolt Size	M8
Bushing Diameter	8mm
Wheel Bearing	ball bearing

