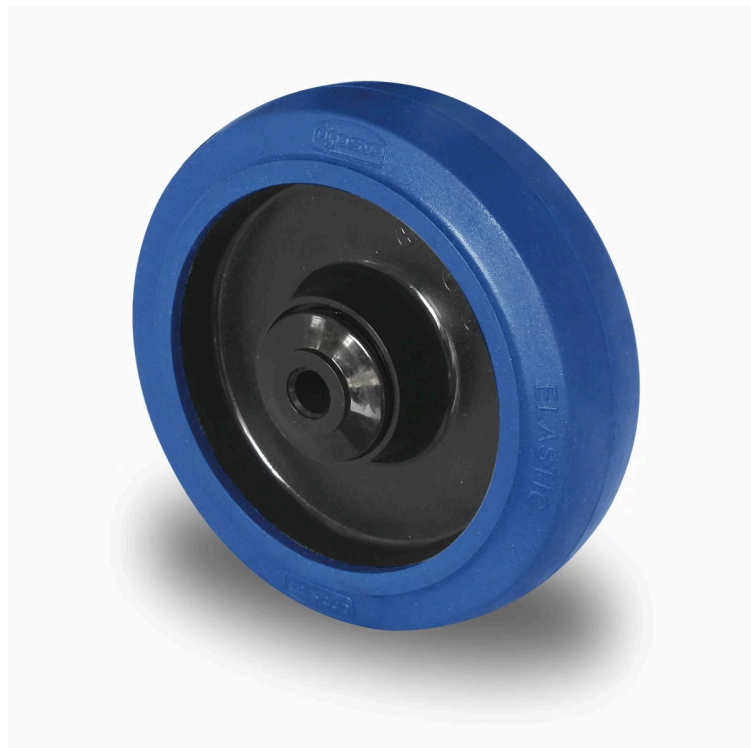




## WHEEL 100R4M1R0N



<b>Product SKU</b>	100R4M1R0N
<b>Standard Compliance</b>	DIN EN 12532
<b>Series</b>	R4M1
<b>Material of the Wheel</b>	polyamide (PA) wheel center
<b>Tread</b>	elastic tread
<b>Temperature range</b>	-20°C to +80°C
<b>Wheel Diameter</b>	100mm
<b>Load Capacity</b>	165kg
<b>Width of Tread</b>	35mm
<b>wheel hub Width</b>	40mm
<b>Wheel Bolt Size</b>	M8
<b>Bushing Diameter</b>	12mm
<b>Weight</b>	0.29kg
<b>Wheel Bearing</b>	roller bearing
<b>Rubber Shore</b>	75° Shore A

