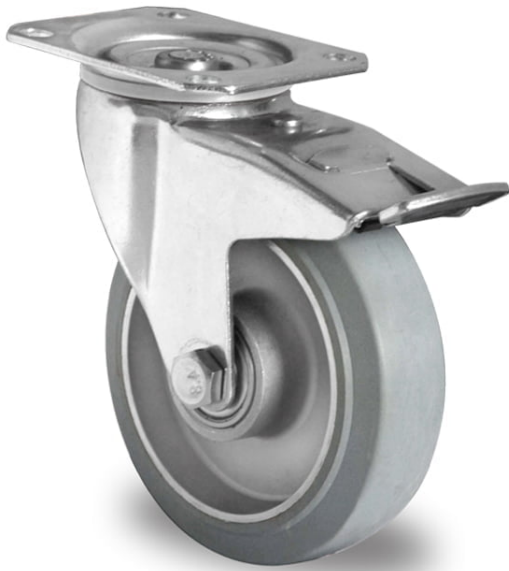


## CASTOR TPP37WC100AAE2D0N



|                                  |                       |
|----------------------------------|-----------------------|
| <b>Product SKU</b>               | TPP37WC100AAE2D0N     |
| <b>Standard Compliance</b>       | DIN EN 12532          |
| <b>Series</b>                    | AAE2                  |
| <b>Fastening</b>                 | Plate fastening       |
| <b>Brake and Direction</b>       | back brake            |
| <b>Material of the Wheel</b>     | aluminum wheel center |
| <b>Tread</b>                     | elastic tread         |
| <b>Temperature range</b>         | -20°C to +80°C        |
| <b>Wheel Diameter</b>            | 100mm                 |
| <b>Load Capacity</b>             | 200kg                 |
| <b>Total Hight</b>               | 128mm                 |
| <b>Width of Tread</b>            | 40mm                  |
| <b>wheel hub Width</b>           | 40mm                  |
| <b>Offset</b>                    | 40mm                  |
| <b>Dimension of Plate</b>        | 105x80mm              |
| <b>Hole Spacing of the Plate</b> | 80/77x60mm            |
| <b>Swivel Radius</b>             | 127mm                 |
| <b>Wheel Bolt Size</b>           | M8                    |
| <b>Bushing Diameter</b>          | 12mm                  |
| <b>Weight</b>                    | 1.26kg                |
| <b>Wheel Bearing</b>             | double ball bearing   |
| <b>Rubber Shore</b>              | 65° Shore A           |





## CASTOR TPP37WC100AAE2D0N

